



"Your Partner in Metal Excellence: Ferrous and Non-Ferrous Supplies"



SWASTIK

METAL & INDUSTRIES

Mfg. of: S.S. & M.S. Pipe, Flanges & Fitting, Dairy Fittings.
Stockist & Suppliers of: Project Materials, S.S. Sheets, Plates, Rods,
Seamless Pipes & Industrial Raw Materials in Ferrous & Non Ferrous Metal.



Strength like Sardar Patel and stainless steel quality are symbols of unwavering resilience and enduring durability. Sardar Patel, often referred to as the "Iron Man of India," exemplified the strength and determination needed to unite a diverse nation. His legacy reminds us that strength can bridge divides and bring people together. Similarly, stainless steel quality represents a remarkable combination of toughness and corrosion resistance, making it a trusted material for various applications. Just as Sardar Patel's leadership strengthened India, stainless steel quality ensures lasting performance in a wide range of products and industries, embodying the principles of steadfastness and dependability.

Subject: Vendor Registration Application - Metal Suppliers

Dear Sir/Madam

I am writing on behalf of Swastik Metal & Industries, a distinguished supplier of ferrous and non-ferrous metals. We are interested in becoming an approved vendor for your organization.

With a proven track record of serving various sectors, including Chemicals, Pharmaceuticals, Fertilizers, Petrochemicals, Nuclear Power, Thermal Power, Cement, Paper, and Refineries, we take pride in being one of the largest importers and stockists of these metals. Additionally, we manufacture stainless steel flanges and fittings in various grades, shapes, and sizes.

Inclusion in your approved vendor list will grant you access to a reliable partner committed to quality and customer satisfaction.

Please contact us at info@swastikmetalind.com or +91 95888 34057 to discuss the registration process further. We are prepared to provide any necessary documentation.

We look forward to the opportunity to serve your organization and establish a mutually beneficial partnership.

Sincerely,

Swastik Metal & Industries

ABOUT US

Welcome to Swastik Metal Industries, your trusted partner in the world of metals. Since our establishment in 2017, we have been dedicated to providing top-quality materials and services in the realm of stainless steel, mild steel, carbon steel, ferrous, and non-ferrous metals.

As a leading stockist and supplier, Swastik Metal Industries offers a comprehensive range of products, including pipes, tubes, sheets, coils, plates, angles, channels, flanges, fittings, and more, catering to diverse needs in terms of sizes, shapes, and grades. Our commitment to excellence is reflected in our ISO 9001:2015 and MSME certifications, ensuring that our customers receive products of the highest standards.

With a growing reputation for reliability and quality, Swastik Metal Industries has established itself as a preferred choice for over 500 customers across the country. Our extensive inventory and commitment to customer satisfaction make us a go-to source for all your metal requirements.

At Swastik Metal Industries, we don't just deliver metals; we deliver trust, quality, and a promise to meet your expectations every time. Partner with us for a reliable supply of premium metals tailored to your specific needs.



"Business blossoms much like a plant, thriving through mutual cooperation. With your efforts and ours intertwined, business will grow together, reaching new heights in harmony."



STAINLESS STEEL PIPES

Swastik Metal Industries is India's fastest-growing Stockist of high-quality stainless steel ERW / NB pipes which are used in various applications across various sectors. Our diverse range of industrial Piping is being manufactured by using optimum quality raw materials and contemporary technology to meet definite industrial standards.

Welded Pipe

Outside Diameter Range	1/8" NB to 48" NB
Wall Thickness Range	Sch. 5S to Sch. 80S
Length	as per requirement (Max. up to 24 mtr. long)
Grades	304/L/H/LN, 316/L/H/LN/Ti, 309, 310/L/H/S, 317/L/H, 321/H, 347/H, UNS S31500, UNS S31803, UNS S2205, UNS S32750, UNS S32760
Specification	ASTM A-312, A-554, A-778, A-790

Seamless Pipe

Outside Diameter Range	1/8" NB to 24" NB
Wall Thickness Range	Sch. 10S to Sch. XXS
Length	as per requirement (Max. up to 24 mtr. long)
Grades	304/L/H/LN, 316/L/H/LN/Ti, 309, 310/L/H/S, 317/L/H, 321/H, 347/H, UNS S31500, UNS S31803, UNS S2205, UNS S32750, UNS S32760
Specification	ASTM A-312, A, A-790

Box Pipe

Outside Diameter Range	15x15 to 150x150
Wall Thickness Range	1 mm to 6 mm
Length	As per requirement (Max. up to 12 mtr. long)
Grades	304/L/H/LN, 316/L/H/LN/Ti, 309, 310/L/H/S, 317/L/H, 321/H, 347/H, UNS S31500, UNS S31803, UNS S2205, UNS S32750, UNS S32760
Specification	As per requirement

BUTWELD FITTINGS



Stainless Steel	ASTM A403 WP 304/304L/304H/316/316L/317/317L /321/310/347/904L etc.
Carbon Steel	ASTM A234 WPB/A420 WPL3/A420 WPL6/ MSS-SP-75 WPHY 42/46/52/56/60/65/70
Alloys Steel	ASTM A234 WP1/ WP5/WP11/WP22/WP91 etc.
Others	Monel, Nickel, Inconel, Hastalloy, Copper, Brass, Bronze, Tantalum, Bismuth, Aluminum, High Speed Steel, Zinc, Lead, etc.
Types	Elbow, Tee, Reducer, Return Bends, Stub-Ends, Cap, Collar, Cross, Insert etc.
Size	1/4" NB to 32"NB (Seamless & Welded)
Wall Thickness	Sch. 5S to Sch. XXS.

INSTRUMENT/ FERRULE FITTINGS



Stainless Steel	ASTM A182 F304 304 318/31/312/31 TL 321/346/347/904L etc
Carbon Steel	ASTM A105 AE94 F4246/52/56/ 60/65/70IA35OLF3/A350 LF2 Alloy Steel ASTM A1EZEUF3 F1 F1 F22IF91 etc.
Duplex, Super Duplex Steel	UNS S31803, UNS S32750, UNS S32760, 964L. Alloy 20
Types	Nipples, Adaptors, Crosses, Union Ball Joints, Reducing Bushing, Reducers, Pipe Caps, Couplings, Pipe Plug, Hollow Hex Plug, Elbow, Reducing Union 90 Deg. Union Elbow, Reducing 90 Deg Union Elbow Etc. Extender Leg 90 Deg. Union Elbow, 45 Deg, Union Elbow, Union Tee, Female Connector, Male Connector, Manifold Tee, Locator Union Extended Run Leg Union Tee, Reducing Tee, Triblow, ATW Weld Ring. Tube Socket Weld, Tube Butt Weld, Tube Butt Weld To Tube Socket Weld, Port Connector Etc.

FLANGES



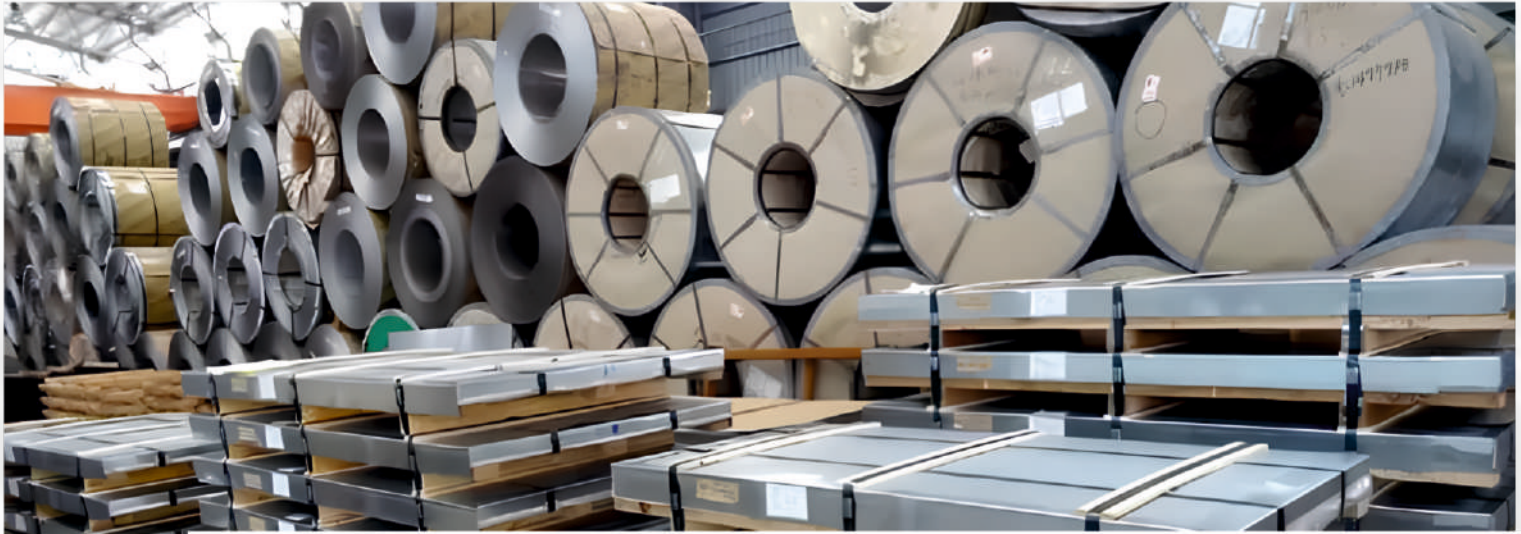
Stainless Steel	ASTM A182 F304/3040 304H/316/316L/17/3170 321 313347/904L etc
Carbon Steel	ASTM A105/A694F42/ 46/5256:60165/70/A350/LF3/A350 LF2 etc.
Alloy Steel	ASTM A182 F1/FS/F9F11/ F22/ F91 etc
Others	Monel, Nickel, Inconel, Hastalloy, Copper, Brass, Bronze, Tantalum, Bismuth, Aluminum, High Speed Steel, Zinc, Lead, etc.
Types	Weldneck, Slipon, Blind, Socket Weld, Lap Joint Spectacles, Ring Joint, Orifcae, Long Weldneck, Deck Flange, RTJ, Flange
Size	1/2 NB TO24 NB
Class	150#, 300#, 400#, 600#, 900#, 1500# & 2500#

FASTENERS



Stainless Steel	AISI 302/304/304L/316/316L/310/317/317L/321/347, 410/420/904L etc.
Alloys Steel	4.6,5.6,6.6, 8.8, 10.98 129/R S. T' Condition
Carbon Steel	Bare Condition, Galvanized, Phosphatized, Cadmium Plated, Hot Deep Galvanized, Bloodied, Nickel Chrome Plated, etc.
Non - ferrous Metal	Copper, Brass, Aluminium, Titanium, Nichrome, AL. Bronze Phosphorous Bronze, etc.
Type	Bolts, Nuts, Washers, Anchor Fasteners, Stud Bolts, Eye Bolt Stud Threaded Rod, Cotter Pin. Socket Screw, Fine Fasteners & Spares, Foundation Fasteners, etc.

STAINLESS STEEL SHEET, PLATE AND COILS



Stainless Steel Sheets

Stainless Steel Plate

Stainless Steel Coils

Material	Stainless Steel, Nickel Alloys, Carbon Steel, Alloy Steel, Other Ferrous and non-ferrous Metals.		
Grades	310/310S, 304/304L, 3095, 316L, 317, 321, 409, 410, 430, 904L & Duplex etc.		
Wall Thickness	0.25 mm and above	3 mm and above	0.2 mm - 12 mm
Width	1000mm - 2000 mm	1000 mm to 2000 mm	6mm - 2000 mm
Length	as per Requirement	as per Requirement	as per Requirement

STAINLESS STEEL ROUND, SQUARE, HEX AND WIRE BAR



Round Bar

Square Bar

Hex Bar

Wire Bar

Material	Stainless Steel, Nickel Alloys, Carbon Steel, Alloy Steel, Other Ferrous and non-ferrous Metals.			
Grades	310/310S, 304/304L, 3095, 316L, 317, 321, 409, 410, 430, 904L & Duplex etc.			
Size Dia	2mm to 600 mm	3X3mm to 250X 250mm	3mm to 250mm	0.1 mm to 10mm
Length	as per Requirement (Max. 6000 mm)	as per Requirement (Max. 6000 mm)	as per Requirement (Max. 6000 mm)	as per Requirement

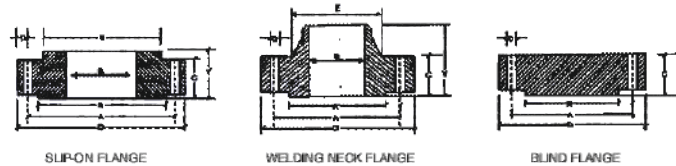
C.S./S.S. PIPE AND TUBES SCHEDULE DIMENSIONS,

Diameter Size Pipe			Nominal Thickness and Weights Number of Schedule												
			Sch 5S		Sch 10S		Sch 10		Sch 20		Sch 30		Sch 40		Sch
Nominal in inch	Nominal in mm	Out Side in mm	mm	kg/m	mm	kg/m	mm	kg/m	mm	kg/m	mm	kg/m	mm	kg/m	mm
1/8	6	10.3	–	–	1.28	0.28	–	–	1.6	0.345	–	–	1.78	0.36	–
1/4	8	13.7	–	–	1.65	0.49	–	–	2.0	0.580	–	–	2.24	0.63	–
3/8	10	17.1	–	–	1.65	0.63	–	–	2.0	0.750	–	–	2.31	0.85	–
1/2	15	21.3	1.65	0.80	2.11	1.00	–	–	2.0	0.957	–	–	2.77	1.26	–
3/4	20	26.6	1.65	1.03	2.11	1.28	–	–	2.5	1.500	–	–	2.87	1.68	–
1	25	33.4	1.65	1.29	2.77	2.08	–	–	2.5	1.916	–	–	3.38	2.50	–
1¼	32	42.1	1.65	1.65	2.77	2.69	–	–	3.0	2.910	–	–	3.56	3.33	–
1½	40	48.2	1.65	1.90	2.77	3.12	–	–	3.0	3.370	–	–	3.08	4.05	–
2	50	60.3	1.65	2.38	2.77	3.94	–	–	3.0	4.263	–	–	3.91	5.43	–
2½	65	73.0	2.11	3.70	3.05	5.26	–	–	4.0	6.846	–	–	5.16	8.62	–
3	80	88.9	2.11	4.50	3.05	6.45	–	–	4.0	8.423	–	–	5.49	11.28	–
3½	90	101.6	2.11	5.20	3.05	7.40	–	–	4.5	10.838	–	–	5.74	13.56	–
4	100	114.3	2.11	5.61	3.05	8.34	–	–	4.5	12.255	–	–	6.02	16.06	–
5	125	141.3	2.77	9.45	3.40	11.56	–	–	5.0	16.900	–	–	6.55	21.76	–
6	150	168.2	2.77	11.31	3.40	13.82	–	–	6.35	24.150	–	–	7.11	28.23	–
8	200	219.0	2.77	14.78	3.76	19.94	–	–	6.35	33.28	7.04	36.76	8.18	42.49	10.31
10	250	273.0	3.40	22.62	4.19	27.83	–	–	6.35	41.73	7.80	50.96	9.27	60.24	12.70
12	300	323.8	3.96	33.00	4.57	36.00	–	–	6.35	49.68	8.38	65.14	10.31	79.71	14.27
14	350	355.6	3.96	34.23	4.78	41.18	6.35	54.63	7.92	67.98	9.52	81.21	11.13	94.31	15.09
16	400	406.4	4.19	41.60	4.78	47.33	6.35	62.58	7.92	77.92	9.52	93.13	12.70	123.18	16.66
18	450	457.2	4.19	46.83	4.78	53.18	6.35	70.53	7.92	87.85	11.13	122.12	14.21	155.90	19.05
20	500	508	4.78	59.22	5.54	68.50	6.35	78.47	9.52	116.97	12.70	154.97	15.09	183.14	20.92
22	550	558.8	4.78	63.75	5.54	73.81	6.35	86.42	9.52	128.89	12.70	170.86	–	–	22.22
24	600	609.6	5.54	82.60	6.35	94.37	6.35	94.37	9.52	140.81	14.27	209.54	17.48	254.74	24.61
26	650	660.4	–	–	–	–	7.92	127.58	12.70	202.65	–	–	–	–	–
28	700	711.2	–	–	–	–	7.92	137.52	12.70	218.54	15.88	271.94	–	–	–
30	750	762.0	6.35	–	7.92	–	7.92	147.45	12.70	234.44	15.88	219.81	–	–	–
32	800	812.8	–	–	–	–	7.92	157.39	12.70	250.33	15.88	311.67	17.48	342.17	–
34	850	863.8	–	–	–	–	7.92	169.40	12.70	266.22	15.88	331.54	17.48	364.01	–
36	900	914.4	–	–	–	–	7.92	177.26	12.70	282.12	15.88	351.41	19.05	420.21	–
38	950	965.2	–	–	–	–	–	–	–	–	–	–	–	–	–
40	1000	1016	–	–	–	–	–	–	–	–	–	–	–	–	–
42	1050	1066.8	–	–	–	–	–	–	–	–	–	–	–	–	–
44	1100	1117.6	–	–	–	–	–	–	–	–	–	–	–	–	–
46	1150	1168.4	–	–	–	–	–	–	–	–	–	–	–	–	–
48	1200	1219.2	–	–	–	–	–	–	–	–	–	–	–	–	–

WALL THICKNESS, WT./MTR. (KG)

Nominal Thickness and Weights Number of Schedule														
kg/m	Sch 80		Sch 100		Sch 120		Sch 160		Sch Stand.		Sch XS		Sch XXS	
	mm	kg/m	mm	kg/m	mm	kg/m	mm	kg/m	mm	kg/m	mm	kg/m	mm	kg/m
-	2.41	0.46	-	-	-	-	-	-	1.73	0.36	2.41	0.46	-	-
-	3.02	0.80	-	-	-	-	-	-	2.24	0.63	3.02	0.80	-	-
-	3.20	1.10	-	-	-	-	-	-	2.31	0.85	3.20	1.10	-	-
-	3.73	1.62	-	-	-	-	4.78	1.95	2.77	1.26	3.73	1.62	7.47	2.54
-	3.91	2.19	-	-	-	-	5.56	2.89	2.87	1.68	3.91	2.19	7.82	3.63
-	4.55	3.23	-	-	-	-	6.35	4.23	3.38	2.50	4.55	3.23	9.09	5.45
-	4.85	4.46	-	-	-	-	6.35	5.60	3.56	3.38	4.85	4.46	9.70	7.75
-	5.08	5.40	-	-	-	-	7.14	7.23	3.68	4.05	5.08	5.40	10.16	9.54
-	5.54	7.47	-	-	-	-	8.74	11.10	3.91	5.43	5.54	7.47	11.07	13.44
-	7.01	11.40	-	-	-	-	9.52	14.90	5.16	8.62	7.01	11.40	14.02	20.39
-	7.62	15.25	-	-	-	-	11.13	21.30	5.49	11.28	7.62	15.25	15.24	27.65
-	8.08	18.62	-	-	-	-	-	-	5.74	13.56	8.08	18.82	-	-
-	8.56	22.29	-	-	11.13	28.25	13.49	33.51	6.02	16.06	8.56	22.29	17.12	40.99
-	9.52	30.92	-	-	12.70	40.24	15.88	49.05	6.55	21.76	9.52	30.92	19.05	57.37
-	10.97	42.52	-	-	14.27	54.20	18.26	67.47	7.11	28.23	10.97	42.52	21.95	79.11
53.07	12.70	64.57	15.09	75.79	18.26	90.32	23.01	111.18	8.18	42.49	12.70	64.57	22.22	107.78
81.46	15.09	95.84	18.26	114.59	21.44	132.85	28.58	172.11	9.27	60.24	12.70	81.46	25.40	154.97
108.97	17.48	131.81	21.44	159.59	25.40	186.75	33.32	238.60	9.52	73.76	12.70	97.86	25.40	186.75
126.51	19.05	157.94	23.83	194.64	27.79	224.36	35.71	281.49	9.52	81.21	12.70	107.28	-	-
160.04	21.44	203.26	26.19	245.34	30.96	286.33	40.49	364.94	9.52	93.13	12.70	123.18	-	-
205.62	23.83	254.24	29.36	309.55	34.92	263.33	39.67	459.18	9.52	105.05	12.70	139.07	-	-
247.79	26.19	310.91	32.54	381.20	38.10	441.06	44.45	564.24	9.52	116.97	12.70	154.97	-	-
293.80	28.58	373.27	34.92	450.75	41.28	526.24	47.62	671.28	9.52	128.89	12.70	170.86	-	-
354.62	30.96	441.30	38.89	546.84	46.02	639.18	52.37	806.74	9.9.52	140.81	12.70	202.75	-	-
-	-	-	-	-	-	-	-	-	9.52	152.73	12.70	202.65	-	-
-	-	-	-	-	-	-	-	-	9.52	152.73	12.70	218.54	-	-
-	-	-	-	-	-	-	-	-	9.52	164.65	12.70	234.44	-	-
-	-	-	-	-	-	-	-	-	9.52	176.57	12.70	234.44	-	-
-	-	-	-	-	-	-	-	-	9.52	188.50	12.70	250.83	-	-
-	-	-	-	-	-	-	-	-	9.52	212.34	12.70	282.12	-	-
-	-	-	-	-	-	-	-	-	9.52		12.70		-	-
-	-	-	-	-	-	-	-	-	9.52		12.70		-	-
-	-	-	-	-	-	-	-	-	9.52		12.70		-	-
-	-	-	-	-	-	-	-	-	9.52		12.70		-	-
-	-	-	-	-	-	-	-	-	9.52		12.70		-	-
-	-	-	-	-	-	-	-	-	9.52		12.70		-	-

DIMENSIONS OF FORGED FLANGES ANSI B 16.5



SLIP-ON FLANGE

WELDING NECK FLANGE

BLIND FLANGE

Dimensions of Class 150 Flanges as per ANSI B 16.5

Nominal Pipe Size (MM) (INCH)	Flange Dia O	Dia of Bolt Circle A	Dia of Bolt Holes D	No. of Holes	Thk of Flange C	Dia of Hub E	Length through Hub			Dia of Bore		Dia of R/F R	Depth of Socket F	Pipe Dia X
							S/O & S/W Y	W/N Y	L/J Y	S/O & S/W B	L/J B			
15	88.9	80.3	15.9	4	11.1	30.2	15.9	47.6	15.9	22.3	22.9	34.9	9.5	21.33
20	98.4	69.8	15.9	4	12.7	38.1	15.9	52.4	15.9	27.7	28.2	42.9	11.1	26.67
25	107.9	79.4	15.9	4	14.3	49.2	17.5	55.6	17.5	34.5	35.0	50.8	12.7	33.40
32	117.5	88.9	15.9	4	15.9	58.7	20.6	57.1	20.6	43.2	43.7	63.5	14.3	42.16
40	127.0	98.4	15.9	4	17.5	65.1	22.2	61.9	22.2	49.5	50.0	73.0	15.9	48.26
50	152.4	120.6	19.0	4	19.0	77.8	25.4	63.5	25.4	62.0	62.5	92.1	17.5	60.31
65	177.8	139.7	19.0	4	22.2	80.5	28.6	68.8	28.6	74.7	75.4	104.8	19.0	73.02
80	190.5	152.4	19.0	4	23.8	107.9	30.2	69.8	30.2	90.7	91.4	127.0	20.6	88.90
100	228.6	190.5	19.0	8	23.8	134.9	33.3	78.2	33.3	116.1	116.8	157.2	23.8	114.30
125	254.0	215.9	22.2	8	23.8	163.5	36.5	88.9	36.5	143.8	144.5	185.7	23.8	141.30
150	279.4	241.3	22.2	8	25.4	192.1	39.7	88.9	39.7	170.7	171.4	215.9	27.0	168.27
200	342.9	298.4	22.2	8	28.6	246.1	44.4	101.6	44.4	221.5	222.2	269.9	31.7	219.07
250	406.4	361.9	25.4	12	30.2	304.9	49.2	101.6	49.2	276.3	277.4	323.8	33.3	273.05
300	482.6	431.8	25.4	12	31.8	365.1	55.6	114.3	55.6	327.1	328.2	381.0	39.7	323.85
350	533.4	476.2	28.6	12	34.9	400.0	57.1	127.0	79.4	359.1	360.2	412.7	41.3	355.60
400	596.9	539.7	28.6	16	36.5	457.2	63.5	127.0	87.3	410.5	411.2	469.9	44.4	406.40
450	635.0	577.8	31.7	16	39.7	504.8	68.3	139.7	96.8	461.8	462.3	533.4	49.2	457.20
500	698.5	635.0	31.7	20	42.9	558.8	73.0	144.5	103.2	513.1	514.3	584.2	54.0	508.00
600	812.8	749.3	34.9	20	47.6	663.6	82.5	152.4	111.1	615.9	615.9	692.1	63.5	609.60

All Dimensions are in Millimeters • Flanges except Lap Joint will be furnished with (1.6mm) Raised Face, which is included in Thickness (C) and Length through Hub(Y).

Dimensions of Class 300 Flanges as per ANSI B 16.5

Nominal Pipe Size (MM) (INCH)	Flange Dia O	Dia of Bolt Circle A	Dia of Bolt Holes D	No. of Holes	Thk of Flange C	Dia of Hub E	Length through Hub			Dia of Bore		Dia of R/F R	Depth of Socket F	Pipe Dia X
							S/O & S/W Y	W/N Y	L/J Y	S/O & S/W B	L/J B			
15	95.2	66.7	15.9	4	14.3	38.1	22.2	52.4	22.2	22.3	22.9	34.9	9.5	21.33
20	117.5	82.5	19.0	4	15.9	47.6	25.4	57.1	25.4	27.7	28.2	42.9	11.1	26.67
25	123.8	88.9	19.0	4	17.5	54.0	27.0	61.9	27.0	34.5	35.0	50.8	12.7	33.40
32	133.3	98.4	19.0	4	19.0	63.5	27.0	65.1	27.0	43.2	43.7	63.5	14.3	42.16
40	155.6	114.3	22.2	4	20.6	69.8	30.2	69.3	30.2	49.5	50.0	73.0	15.9	48.26
50	165.1	127.0	19.0	8	22.2	84.1	33.3	69.8	33.3	62.0	62.5	92.1	17.5	60.31
65	212.0	149.2	22.2	8	25.4	100.0	38.1	79.4	38.1	74.7	75.4	104.8	19.0	73.02
80	209.5	168.3	22.2	8	28.6	117.5	42.9	79.4	42.9	90.7	91.4	127.0	20.6	88.90
100	254.0	200.0	22.2	8	31.8	148.0	47.6	85.7	47.6	116.1	116.8	157.2	23.8	114.30
125	279.4	234.9	22.2	8	34.9	177.8	50.8	98.4	50.8	143.8	144.5	185.7	-	141.30
150	317.5	269.9	22.2	12	36.5	206.4	52.4	96.4	52.4	170.7	171.4	215.9	-	168.27
200	381.0	330.2	25.4	12	41.3	260.3	61.9	111.1	61.9	221.5	222.2	269.9	-	219.07
250	444.5	387.3	28.6	16	47.6	320.7	68.7	117.5	95.2	276.3	277.4	323.8	-	273.05
300	520.7	450.8	31.7	16	50.8	374.6	73.0	130.2	101.6	327.1	328.2	381.0	-	323.85
350	584.2	514.3	31.7	20	54.0	425.4	78.2	142.9	111.1	359.1	360.2	412.7	-	355.60
400	647.7	571.5	34.9	20	57.2	482.6	82.5	146.0	120.6	410.5	411.2	469.9	-	406.40
450	711.2	628.5	34.9	24	60.3	533.4	88.9	158.7	130.2	461.8	462.3	533.4	-	457.20
500	774.7	685.8	34.9	24	63.5	587.4	95.2	161.9	139.7	513.1	514.3	584.2	-	508.00
600	814.4	812.8	41.3	24	68.8	701.7	106.4	188.3	152.4	615.9	615.9	692.1	-	609.60

All Dimensions are in Millimeters • Flanges except Lap Joint will be furnished with (1.6mm) Raised Face, which is included in Thickness (C) and Length through Hub(Y).

Dimensions of Class 600 Flanges as per ANSI B 16.5

Nominal Pipe Size (MM)	Flange Dia O	Dia of Bolt Circle A	Dia of Bolt Holes D	No. of Holes	Thk of Flange C	Dia of Hub E	Length through Hub			Dia of Bore		Dia of R/R R	Depth of Socket F	Pipe Dia X
							S/O & S/W Y	W/N Y	L/J Y	S/O & S/W B	L/J B			
15	95.2	66.7	15.9	4	14.3	38.1	22.2	52.4	22.2	22.3	22.8	34.9	9.5	21.33
20	117.5	82.5	19.0	4	15.9	47.6	25.4	57.1	25.4	27.7	28.1	42.9	11.1	26.67
25	123.8	88.9	19.0	4	17.5	54.0	27.0	61.9	26.9	34.5	35.0	50.8	12.7	33.40
32	133.3	98.4	19.0	4	20.6	63.5	28.6	66.7	28.4	43.2	43.6	63.5	14.2	42.16
40	155.6	114.3	22.2	4	22.2	69.8	31.7	69.8	31.7	49.5	50.0	73.0	15.8	48.26
50	165.1	127.0	19.0	8	25.4	84.1	36.5	73.0	36.5	62.0	62.4	92.1	17.4	60.31
65	190.5	149.2	22.2	8	28.6	100.0	41.3	79.4	41.1	74.7	75.4	104.8	19.0	73.02
80	209.5	168.3	22.2	8	31.8	117.5	46.0	82.5	45.9	90.7	91.4	127.0	-	88.90
100	273.0	215.9	25.4	8	38.1	152.4	54.0	101.6	53.8	116.1	116.8	157.2	-	114.30
125	330.2	266.7	28.6	8	44.4	188.9	60.3	114.3	60.4	143.8	144.5	185.7	-	141.30
150	365.6	292.1	28.6	12	47.6	222.2	66.7	117.5	66.4	170.7	171.4	215.9	-	168.27
200	419.1	349.2	31.7	12	55.6	273.0	76.2	133.3	76.2	221.5	222.2	269.9	-	219.07
250	508.0	431.8	34.9	16	63.5	342.9	85.7	152.4	111.2	276.3	277.4	323.8	-	273.05
300	558.8	488.9	34.9	20	66.7	400.0	92.1	155.6	117.3	327.1	328.2	381.0	-	323.85
350	603.2	527.0	38.1	20	69.9	431.8	93.7	165.1	127.0	359.1	360.1	412.7	-	355.60
400	685.8	603.2	41.3	20	76.2	495.3	106.4	177.8	139.7	410.5	411.2	469.9	-	406.40
450	742.9	654.0	44.4	20	82.6	546.1	117.5	184.1	152.4	461.8	462.3	533.4	-	457.20
500	812.8	723.9	44.4	24	88.9	609.9	127.0	190.5	165.1	513.1	514.3	584.2	-	508.00
600	939.8	838.2	50.8	24	101.6	717.5	139.7	203.2	184.1	615.9	615.9	692.1	-	609.60

All Dimensions are in Millimeters • Flanges except Lap Joint will be furnished with (6.35mm) Raised Face, which is not included in Thickness (C) and Length through Hub(Y).

DIMENSIONS OF FLANGES AS PER TABLE BS - 10



TABLE - D

For Working Steam Pressure upto 50 lbs per sq. inch

Nominal Pipe Size	O.D. of Pipe	O.D.	P.C.D.	No. of Bolt	Dia of Bolt	Thickness
½"	21.3	95.3	66.7	4	12.7	4.8
¾"	26.7	101.6	73.0	4	12.7	4.8
1"	33.4	114.3	82.6	4	12.7	4.8
1¼"	42.2	120.7	87.3	4	12.7	6.4
1½"	48.3	133.4	98.4	4	12.7	6.4
2"	60.3	152.4	114.3	4	15.9	7.9
2½"	73.0	165.1	127.0	4	15.9	7.9
3"	88.9	184.2	146.1	4	15.9	9.5
3½"	101.6	203.2	165.1	4	15.9	9.5
4"	114.3	215.9	177.8	4	15.9	9.5
5"	141.3	254.0	209.6	8	15.9	12.7
6"	168.3	279.4	228.6	8	15.9	12.7
7"	190.5	304.8	260.4	8	15.9	12.7
8"	219.1	336.6	292.1	8	15.9	12.7
9"	244.5	368.3	323.9	8	15.9	15.9
10"	273.0	406.4	355.6	8	19.1	15.9
12"	323.9	457.2	406.4	12	19.1	15.9
14"	355.6	527.1	469.9	12	22.2	19.1
16"	406.4	577.9	520.7	12	22.2	19.1
18"	457.2	641.4	584.2	12	22.2	22.2
20"	508.0	704.9	641.4	16	22.5	25.4
24"	609.6	825.5	755.7	16	25.4	28.6

TABLE - E

For Working Steam Pressure from 50 lbs to 100 lbs per sq. inch

Nominal Pipe Size	O.D. of Pipe	O.D.	P.C.D.	No. of Bolt	Dia of Bolt	Thickness
½"	21.3	95.3	66.3	4	12.7	6.4
¾"	26.7	101.6	73.0	4	12.7	6.4
1"	33.4	114.3	82.6	4	12.7	7.1
1¼"	42.2	120.7	87.3	4	12.7	7.9
1½"	48.3	133.4	98.4	4	12.7	8.7
2"	60.3	152.4	114.3	4	15.9	9.5
2½"	73.0	165.1	127.0	4	15.9	10.3
3"	88.9	184.2	146.1	4	15.9	11.1
3½"	101.6	203.2	165.1	8	15.9	11.9
4"	114.3	215.9	177.8	8	15.9	12.7
5"	141.3	254.0	209.6	8	15.9	14.3
6"	168.3	279.4	235.0	8	19.1	17.5
7"	190.5	304.8	260.4	8	19.1	19.1
8"	219.1	336.6	292.1	8	19.1	19.1
9"	244.5	368.3	323.9	12	19.1	20.6
10"	273.0	406.4	355.6	12	19.1	22.2
12"	323.9	457.2	406.4	12	22.2	25.4
14"	355.6	527.2	469.9	12	22.2	25.4
16"	406.4	577.9	520.7	12	22.2	25.4
18"	457.2	641.4	584.2	16	22.2	28.6
20"	508.0	704.9	647.4	16	22.2	31.8
24"	609.6	825.5	755.7	16	25.4	38.1

TABLE - F For Working Steam Pressure From 100 lbs to 150 lbs per sq. inch

Nominal Pipe Size	O.D. of Pipe	O.D.	P.C.D.	No. of Bolt	Dia of Bolt	Thickness
½"	21.3	95.3	66.7	4	12.7	9.5
¾"	26.7	101.6	73.0	4	12.7	9.5
1"	33.4	120.7	87.3	4	15.9	9.5
1¼"	42.2	133.4	98.4	4	15.9	12.7
1½"	48.3	139.7	104.8	4	15.9	12.7
2"	60.3	165.1	127.0	4	15.9	15.9
2½"	73.0	184.2	146.1	8	15.9	15.9
3"	88.9	203.2	165.1	8	15.9	15.9
3½"	101.6	215.9	177.8	8	15.9	19.1
4"	114.3	228.6	190.5	8	15.9	19.1
5"	141.3	279.4	235.0	8	19.1	22.2
6"	168.3	304.8	260.4	12	19.1	22.2
7"	190.5	336.6	292.1	12	19.1	22.2
8"	219.1	368.3	323.9	12	19.1	25.4
9"	244.5	406.4	355.6	12	22.2	25.4
10"	273.0	431.8	381.0	12	22.2	25.4
12"	323.9	489.0	438.2	16	22.2	28.6
14"	355.6	552.5	495.3	16	25.4	31.8
16"	406.4	609.6	552.5	20	25.4	31.8
18"	457.2	673.1	609.6	20	28.6	34.9
20"	508.0	736.6	673.1	24	28.6	38.1
24"	609.6	850.9	781.1	24	31.8	41.3

TABLE - H For Working Steam Pressure From 150 lbs to 250 lbs per sq. inch

Nominal Pipe Size	O.D. of Pipe	O.D.	P.C.D.	No. of Bolt	Dia of Bolt	Thickness
½"	21.3	114.3	82.6	4	15.9	12.7
¾"	26.7	114.3	82.6	4	15.9	12.7
1"	33.4	120.7	87.3	4	15.9	14.3
1¼"	42.2	133.4	98.4	4	15.9	17.5
1½"	48.3	139.7	104.8	4	15.9	17.5
2"	60.3	165.1	127.0	4	15.9	19.1
2½"	73.0	184.2	146.1	8	15.9	19.1
3"	88.9	203.2	165.1	8	15.9	22.2
3½"	101.6	215.9	177.8	8	15.9	22.2
4"	114.3	228.6	190.5	8	15.9	25.4
5"	141.3	279.4		8	19.1	28.6
6"	168.3	302.8	260.4	12	19.1	28.6
7"	190.5	336.6	292.1	12	19.1	31.8
8"	219.1	368.3	323.9	12	19.1	31.8
9"	244.5	406.4	355.6	12	22.2	34.9
10"	273.0	431.8	381.0	12	22.2	34.9
12"	323.9	489.0	438.2	16	22.2	38.1
14"	355.6	552.5	495.3	16	25.4	41.3
16"	406.4	609.6	552.5	20	25.4	44.5
18"	457.2	673.1	609.6	20	28.6	47.6
20"	508.0	736.6	673.1	24	28.6	50.8
24"	609.6	850.9	781.1	24	31.8	57.2

INDUSTRIAL VALVES

GLOBE VALVE



BS 5352 / BS 6755 / BS 1873 / BS 6755
ASME B 16.34 DIN 3356
STAINLESS STEEL (BAR STOCK)
 RATING : 150# / 300 #
 SIZE : 8 MM TO 100 MM

FORGED CARBON STEEL / S. STEEL
 RATING : 150# / 300 # / 800 # / 1500 #
 SIZE : 15 MM TO 400 MM

CAST CARBON STEEL / S. STEEL, ALLOY STEEL
 RATING : 150# / 300 # / 600 # / 900 #
 SIZE : 15 MM TO 400 MM

CAST IRON
 RATING : 125# / 150 #
 SIZE : 25 MM TO 600 MM

	FORGED RANGE	CAST IRON
DESIGN (MFG.) STD.	BS 5352	BS 1873 / DIN 3356
TEST (INSPECTION) STD.	BS 6755	BS 6755

NON RETURN VALVE

STAINLESS STEEL (BAR STOCK)
 RATING : 150# / 300 #
 SIZE : 8 MM TO 100 MM

FORGED CARBON STEEL / S. STEEL
 RATING : 150# / 300 # / 800 # / 1500 #
 SIZE : 15 MM TO 400 MM

CAST CARBON STEEL / S. STEEL, ALLOY STEEL
 RATING : 150# / 300 # / 600 # / 900 #
 SIZE : 15 MM TO 400 MM

CAST IRON
 RATING : 125 / 150 #
 SIZE : 25 MM TO 600 MM

	FORGED RANGE	CAST IRON
DESIGN (MFG.) STD.	BS 5352	BS 1873 / DIN 3356
TEST (INSPECTION) STD.	BS 6755	BS 6755

SPHERICAL DISC VALVE

BODY & DISC : CF8/CF8M/C.I. / WCB
SEAT : PTFE (Available EPDM Metal to Metal)

GLAND BEARING : PTFE
OPER. TEMP. : -50°C to 38°C
 -50°C to 220°C (Soft Seat)
 -50°C to 600°C (M to M)

HANDLE : M.S. / S. STEEL
PLATE MOUNTING : NAMUR / STANDARD
OPERATION : HAND LEVER TYPE
 WORM GEAR BOX

TYPE : PNEUMATIC ACTUATED
 ELECTRICAL ACTUATED
SIZE : 40 MM TO 900 MM



DIN GLOBE VALVE

BS 6755 / BS 1873 / ASME B 16.34 / DIN 3356
CAST CARBON STEEL / S. STEEL

RATING : PN 40 / PN 64
 SIZE : 25 MM TO 300 MM
 DESIGN STD : BS 1873 / DIN 3356
 TEST (INSPECTION) STD : BS 6755

CAST IRON
 RATING : PN 10 / PN 16
 SIZE : 15 MM TO 250 MM



GATE VALVE

STAINLESS STEEL (BAR STOCK)

RATING : 150# / 300 #
 SIZE : 8 MM TO 100 MM

FORGED CARBON STEEL / S. STEEL
 RATING : 150# / 300 # / 800 # / 1500 #
 SIZE : 15 MM TO 400 MM

CAST CARBON STEEL / S. STEEL, ALLOY STEEL

RATING : 150# / 300 # / 600 # / 900 #
 SIZE : 25 MM TO 600 MM

CAST IRON
 RATING : 125# / 150 #
 SIZE : 25 MM TO 600 MM



	FORGED RANGE	CAST IRON
PRESS / TEMP. RATING	ANSI 16.34 / API 6 D	ANSI 16.34
DESIGN (MFG.) STD.	API 602 / BS 5352	API 600 / API 6D
TEST (INSPECTION) STD.	API 598 BS 6755	AI 598 / API 6D

BUTTERFLY VALVE

API 609 / BS 5155 / IS 13095 / CAST IRON

OPERATING : LEVER / MANUAL GEAR
DESIGN : SURE SEAL / REPLACEABLE RUBBER LINING
ENDS : WAFER TYPE / DOUBLE FLANGE
SIZE : LUG TYPE
DESIGN : 40 MM TO 500 MM
OPERATION : OFFSET DISC
SIZE : LEVER / GEAR (ISI MARKED)
 350 MM TO 1200 MM

CAST CARBON STEEL

DESIGN : SURE SEAL / REPLACEABLE
ENDS : RUBBER LINING
SIZE : WAFER TYPE
 40 MM TO 500 MM

STAINLESS STEEL

DESIGN : OFFSET DISC.
OPERATION : LEVER / MANUAL / GEAR
ENDS : WAFER TYPE
SIZE : 40 MM TO 400 MM

Mfg. STD : BS 5155 / AWWA C 504 API 609 / IS 13095
TEST STD : BS 6155 / BS 6755



STRAINER

CAST CARBON STEEL / S. STEEL

DESIGN : Y-TYPE (PN 40 / DIN 3356 / BS 1873)
SIZE : 15 MM TO 300 MM

STAINLESS STEEL

DESIGN : Y-TYPE (150#)
ENDS : SCREWED / SOCKET WELD
SIZE : 15 MM TO 80 MM

CAST IRON

DESIGN : Y-TYPE (150#)
ENDS : SCREWED / FLANGED
SIZE : 15 MM TO 300 MM
DESIGN : POT TYPE
ENDS : FLANGED
SIZE : 40 MM TO 300 MM
DESIGN : T-TYPE (DIRT BOX)
ENDS : FLANGED
SIZE : 25 MM TO 300 MM



DIN NON RETURN VALVE

CAST CARBON STEEL S. STEEL / ALLOY STEEL

RATING : PN 40 / PN 64
 SIZE : 15 MM TO 300 MM

CAST IRON

RATING : PN 10 / PN 16
 SIZE : 15 MM TO 250 MM



CHEMICAL COMPOSITION OF STAINLESS STEEL

Stainless steel is essentially a low carbon steel which contains chromium at 10% or more by weight. It is this addition of chromium that gives the steel its unique stainless, corrosion resisting properties. The corrosion resistance and other useful properties of the steel are enhanced by increased chromium content and the addition of other elements such as molybdenum, nickel and nitrogen.

Grade AISI	Chemical Composition - Per cent									Nearest Equivalent Specification	
	C Max	Mn Max	P Max	S Max	Si Max	Cr	Ni	Mo	Other Element	I.S.	En'
AUSTENITIC											
201	0.15	5.5/7.5	0.06	0.03	1	16.0/18.0	3.5/5.5	-	-	-	-
202	0.15	7.5/10	0.06	0.03	1	17.0/19.0	4.0/6.0	-	-	-	-
301	0.15	2.0max	0.045	0.040	1.0	16.0/18.0	6.0/8.0	-	-	10Cr17Ni7	-
302	0.15	2.0	0.045	0.030	1.0	17.0/19.0	8.0/10.0	-	E-4-3-4%	07Cr. 18Ni9	En-58A
302HQ	0.03	2.0	0.045	0.03	1	17.0/19.0	9.0/10.0	-	CU:3-4.0	-	-
303	0.15	2.0	0.045	0.15min	1.0	17.0/19.0	8.0/10.0	-	E-4-1% max	15Cr18Ni9	EN-58M
303EHS	0.15	2.0	0.02	0.3-0.33	1	17.0/19.0	8.0/10.0	-	CU:1% max	-	-
304	0.08	2.0	0.045	0.030	1.0	18.0/20.0	8.0/10.0	-	-	04Cr18Ni10	En-58E
304L	0.030	2.0	0.045	0.030	1.0	18.0/20.0	8.0/12.0	-	-	02Cr18Ni11	-
304H.C.	0.05	2.0	0.040	0.03	1	18.0/20.0	8.5/9.5	-	CU:2-2.50	-	-
308	0.08	2.0	0.045	0.030	1.0	18.0/21.0	10.0/12.0	-	-	-	-
308LER	0.02	1.5/2.0	0.025	0.02	0.5	19.0/21.0	9.5/11.0	-	-	-	-
309	0.20	2.0 max	0.045	0.030	1.0	22.0/24.0	12.5/15.0	-	-	20Cr24Ni12	-
309LER	0.03	1.5/2.5	0.02	0.015	0.5	23.0/25.0	12.0/14.0	-	-	-	-
309S	0.08	2.0	0.045	0.030	1.0	22.0/24.0	12.0/15.0	-	-	-	-
310	0.25	2.0	0.045	0.030	1.50	24.0/26.0	19.0/22.0	-	-	10Cr25Ni12	-
310S	0.08	2.0	0.045	0.030	1.50	24.0/26.0	19.0/22.0	-	-	-	-
314	0.25	2.0	0.045	0.030	1.5to3	25.0/26.0	19.0/22.0	-	-	-	-
316	0.08	2.0	0.045	0.030	1.0	16.0/18.0	10.0/14.0	2.0/3.0	-	04Cr17Ni12Mo2	En 58H
316I	0.030	2.0	0.045	0.030	1.0	16.0/18.0	10.0/14.0	2.0/3.0	-	03Cr17Ni12Mo2	-
316LER	0.02	1.5/2.0	0.02	0.02	0.5	18.0/20.0	12.0/14.0	2.0/2.75	-	-	-
316TI	0.080	2.0	0.045	0.030	1.0	16.0/18.0	10.0/14.0	2.0/3.0	Ti5xCmin	-	-
317	0.08	2.0	0.045	0.030	1.0	18.0/20.0	11.0/15.0	3.0/4.0	-	-	-
317L	0.030	2.0	0.045	0.030	1.0	18.0/20.0	11.0/15.0	3.0/4.0	N:0.10/0.22	-	-
317N	0.08	2.0	0.045	0.03	1	18.0/20.0	11.0/15.0	3.0/4.0	N:0.10/0.22	-	-
321	0.08	2.0	0.045	0.030	1.0	17.0/19.0	9.0/12.0	-	Ti5Cmin	04Cr18Ni10Ti20	En-58C
347	0.08	2.0	0.045	0.030	1.0	17.0/19.0	9.0/12.0	-	Nb/Ta10xCmin	04Cr18Ni10Nb-40	En-58G
904L	0.02	2.0	0.045	0.035	1	19.0/23.0	23.0/28.0	4.0/5.0	CU:1-2	-	-
FERRITIC											
410	0.15	1.00	0.04	0.03	1.0	11.50/13.5	0.60	-	-	12Cr13	En-56A
416	0.15	1.25	0.06	0.15min	1.0	12.0/14.0	1.25/2.50	-	-	-	-
420	0.15min	1.0	0.04	0.03	1.0	12.0/14.0	0.60	-	-	-	En-56C&D
430	0.12	1.0	0.04	0.03	1.0	16.0/18.0	0.60	-	-	07Cr17	En-60
430L	0.03	1.0	0.04	0.03	1.0	16.0/18.0	0.60	-	-	-	-
430F	0.12	1.25	0.06	0.15min	1.0	16.0/18.0	0.60	-	-	-	-
431	0.2	1.0	0.04	0.03	1.0	15.0/17.0	1.25/2.5	-	-	-	En-57
17.4PH	0.07	1.0	0.04	0.03	1.0	15.0/17.0	3.0/5.0	-	NB:0.15/0.45	-	-
DUPLEX											
1905	0.03	1.2/1.8	0.04	0.03	1.2/2	18.0/19.0	4.3/5.2	2.5/3	N:0.50/0.10	-	-
2205	0.03	2	0.03	0.02	1.0	21.0/23.0	4.5/6.5	2.5/3.5	N:0.8/0.20	-	-
2506	0.08	1.0	0.04	0.03	0.75	26.0/28.0	4/5	1.3/2	-	-	-

THIRD PARTY INSPECTION



OUR EXCELLENCE

Quality is our prime concern. We are able to maintain high quality standards through our committed personnel and Sound infrastructure. We ensure that finest quality material is used for products.

To ensure the Quality of each material, we are providing materials Test Certificate along with supply. Our team of experts maintain a visit on the quality of the products. Every Single piece is attached with test Certificate and reports, We are continually improving our quality to serve our clients better.

OUR FACILITIES

We have a Sound infrastructure. Our spacious warehouse has the capacity to store large quantities of products. We possess a team of experts who are sourcing products of international standard to keep abreast with the global markets.

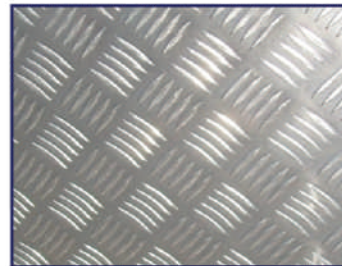
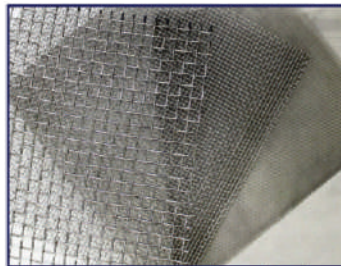
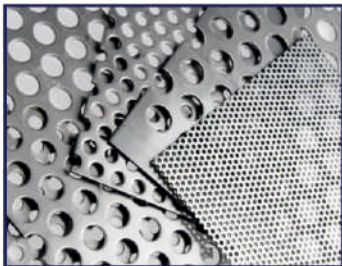
THIRD PARTY INSPECTION

SWASTIK METAL & INDUSTRIES can offer you material with inspection of any third party. Third party inspection offers quality and thorough inspection for buyers. The inspection agency can be nominated by client or we can arrange the third party inspection by various world class reputed agency like below.

Bureau Veritas Industrial Services (India) Pvt. Ltd.: (BVIS)
 Bharat Heavy Electricals Limited : (BHEL)
 Controllerate of Quality Assurance : (CQA)

Nuclear Power Corporation Of India Ltd. : (NPCL)
 Bhabha Atomic Research Centre (BARC)
 Engineers India Limited (EIL)

OTHER PRODUCT



APPLICATION OF INDUSTRIES



IRON & STEEL PLANT



MINES



DISTILLERIES



CEMENT PLANT



PAPER INDUSTRIES



FERTILIZER INDUSTRIES



CHEMICAL INDUSTRIES



SOLAR ENERGY



BEVERAGE INDUSTRIES



OIL & GAS INDUSTRIES



REFINERY PLANT



TEXTILE INDUSTRIES



PHARMACY INDUSTRIES



SUGAR INDUSTRIES



DAIRY INDUSTRIES



FOOD INDUSTRIES



AUTOMOBILE INDUSTRIES



POWER PLANT

FORMULA OF WEIGHT

WEIGHT OF STAINLESS STEEL PIPES & TUBES

O.D. (mm) - W.T. (mm) X W.T. (mm) X 0.02466 = kg. per Meter
 O.D. (mm) - W.T. (mm) X W.T. (mm) X 0.00756 = kg. per Feet

WEIGHT OF STAINLESS STEEL ROUNDS

Dia (mm) X Dia (mm) X 0.00623 = Kg. Per Meter
 Dia (mm) X Dia (mm) X 0.0019 = Kg. Per Feet

WEIGHT OF STAINLESS STEEL SQUARE BARS

Dia (mm) X Dia (mm) X 0.00787 = Kg. Per Meter
 Dia (mm) X Dia (mm) X 0.0024 = Kg. Per Feet

WEIGHT OF STAINLESS STEEL HEXAGONAL RODS

Dia (mm) X Dia (mm) X 0.00680 = Kg. Per Meter
 Dia (mm) X Dia (mm) X 0.002072 = Kg. Per Feet

WEIGHT OF STAINLESS STEEL FLAT BAR

Width (mm) X Thk (mm) X 0.00798 = kg. Per Meter
 Width (mm) X Thk (mm) X 0.00243 = kg. Per Feet

WEIGHT OF STAINLESS STEEL SHEETS

Length (Mtr.) X Width (Mtr.) X Thk (mm) x 8 = kg. per Sheet
 Length (Ft.) X Width (Ft.) X Thk (mm) x 3/4 = kg. per Sheet

WEIGHT OF STAINLESS STEEL CIRCLES & BLANKS

Dia (mm) X Dia (mm) X Thk. (mm)/160 = Gmg. Per Pcs.
 Dia (mm) X Dia (mm) X Thk. (mm)X0.0000063 = Kg. Per Pcs.

WEIGHT OF BRASS/COPPER PIPES

Length (mm) x W.T. (mm) X W.T. (mm) X 0.0260 = Kg. Per Meter

WEIGHT OF CARBON STEEL SHEETS - PLATES

Length (Mtr.) x Width (Mtr.) X Thk (mm) X 7.85 = Kg. Per Sheet

WEIGHT OF LEAD PIPES (APPRO.)

O.D. (mm) - W.T. (mm) X W.T. (mm) X 0.0345 = Kg. Per Meter

WEIGHT OF ALUMINIUM PIPES (APPRO.)

O.D. (mm) - W.T. (mm) X W.T. (mm) X 0.0082 = Kg. Per Meter

WEIGHT OF LEAD SHEETS (APPRO.)

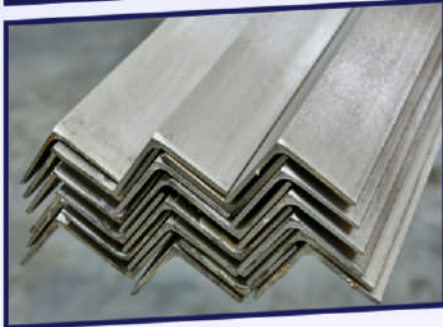
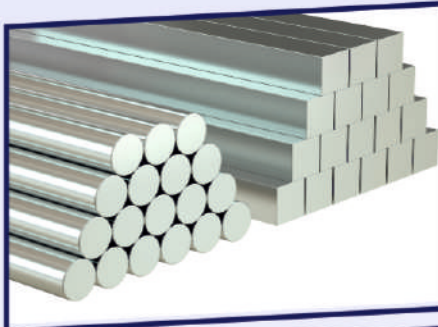
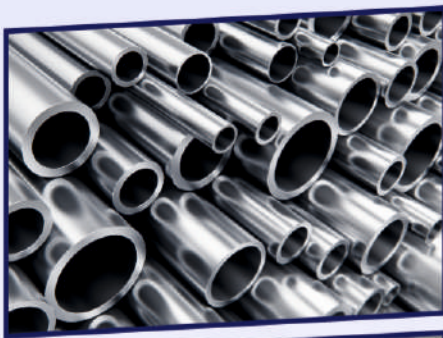
Length (mtr.) x Width (mtr.) X Thk. (mm) X 11.2 = Kg. Per Sheet

WEIGHT OF ALUMINIUM SHEETS (APPRO.)

Length (Mtr.) x width (Mtr.) X Thk. (mm) X 2.69 = Kg. Per Sheet

TENSILE STRENGTH CONVERSION TABLE

1)	Kg/mm ² X 9.81	= N/mm ² =MPa
2)	Psi X 0.0007	= Kg/mm ²
3)	KSi X 1000	= PSi
4)	Kg/mm ² X 1.422	= KSi



"Your Partner in Metal Excellence: Ferrous and Non-Ferrous Supplies"



SWASTIK
METAL & INDUSTRIES

Corporate Office :
#53, GF, Suvan Business Park,
Soma Textile Mill Compound,
Near Kewal Kanta, Rakhial,
Ahmedabad - 380 023

Branch Office :
Office No. 55, 3rd Floor, 122,
Mahaveer Mension, Kika Street,
Gulalwadi, Mumbai - 400 004

Manufacturing Unit :
Opp. HP Petrol Pump,
NH 68, Karola, Sanchore,
Dist - Sanchore 343 041

+91 94137 75054
+91 95888 34057

info@swastikmetalind.com
swastikmetalindustries@yahoo.com

www.swastikmetalind.com



Scan the QR Code and
Connect to WhatsApp



Scan the QR Code and
Visit our Website